

ARRID



P.O. Box 82
WELSHPOOL DC W.A. 6986
Ph: 9258 9299 or 1300 663 563
Fax: 9258 7756
Email: sales@arrid.com.au
Web: www.arrid.com.au



High efficiency compact fluorescent and xelogen lights

RESOLUX

RESOLUX 100



Resolux 100
1x 5 Watt
12 oder 24 Volt DC



Resolux 101
1x 7 Watt
12 oder 24 Volt DC



Resolux 102
1x 9 Watt
12 oder
24 Volt DC

Single lamp luminaires 5-9 watt. The switch has silver-plated contacts and AMP connection. An universal PCB is fitted in all luminaires, suitable for wattages 5 - 11 watt, making it possible to fit smaller compact lamps in larger luminaires. The luminaires are fixed with two V2A screws. The prismatic diffusers are clicked into place at one end, fixed with an acorn nut at the other. All luminaires are supplied with compact lamp and fixing screws.

All Resolux luminaires use the same High-Tech PCB considering latest technology.



RESOLUX 150



Resolux 150
2x5 Watt
12 oder 24 Volt DC



Resolux 151
2x7 Watt
12 oder 24
Volt DC



Resolux 153
2x11 Watt
12 oder 24 Volt DC

Double lamp luminaires with compact lamps 5, 7 and 11 watt. Each lamp has its own PCB with separate circuit. Lamps of varying wattages can be fitted in one luminaire, e.g. instead of fitting two 7 watt lamps in the Resolux 151 it is also possible to fit one 5 watt and one 9 watt lamp.

The luminaires are secured with 2 V2A screws, the diffusers with two acorn nuts. All luminaires are supplied with compact lamps and screws.

RESOLUX 112



Resolux 112
1x 9 Watt
12 oder 24
Volt DC

Recessed luminaire for compact lamp 9 watt. The recessed polycarbonate base is fixed via two V2A screws through the thread rivets. The clear impact-resistant diffuser is then fixed to the thread rivets with acorn nuts.

RESOLUX 120



Resolux 122
1x 8 Watt
12 oder 24
Volt DC



Resolux 123
1x 13 Watt
12 oder 24
Volt DC

Single lamp luminaires 8 and 13 watt. The switch has silver-plated contacts and AMP connection. The luminaires are fixed with two V2A screws. The prismatic diffusers are clicked into place at one end, fixed with an acorn nut at the other. All luminaires are supplied with compact lamp and screws.

RESOLUX 103



Impact-resistant PC prismatic cover

Softstart

Low-loss polarity reversal protection

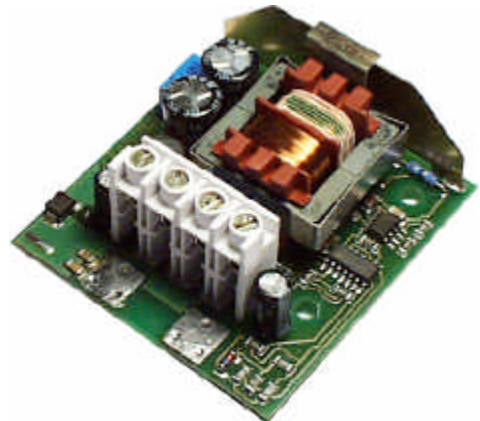
SMD - technology

Switch off when Lamp is faulty

Switch off at undervoltage

Radio interference protection acc. to VDE 0871 B

Robust aluminium ground sheet



RESOLUX 103

Technical Data

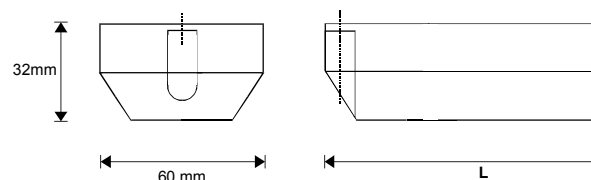
The energy saving lights of this series which are already successfully introduced to the market are now substantially improved by a newly developed PCB. The entire control is now built by SMD-technology and powerful filters are used to lower interference and increase the safety of operation. The flicker-free softstart controlled by electronics enlarges the switching frequency rate. Improved electronic parts decrease losses and increase the durability of PC-board and compact lamp. The intelligent PC-board detects critical operational conditions and will switch off the compact lamp if necessary. The compact lamp will operate at its optimum by automatic control. A constant luminous energy during minimum to maximum operating voltage, as well as undervoltage, secures long durability for the compact lamp. The low-loss polarity reversal protection also is a new addition. All luminaires can be used at high switching frequency rates as well as long operation times. The durability of the compact lamp is about 8000 h. All luminaires are built according to CE-certification. A high radio interference suppression according to VDE 087B is standard. This is more than required by CE-Certification. The ground sheet is made of aluminium and is white powder-coated. The prismatic cover is made of temperature- and UV-resistant PC.

Due to these improvements our tradition of high-grade products continues, which guarantees reliability as well as quality.

Daten:

Voltage range 12 Volt:	10,5 Volt bis 15,0 Volt DC
Voltage range 24 Volt:	21,0 Volt bis 29,0 Volt DC
Operating frequency:	33kHz
Crestfactor:	<1,48
Heat time:	ca. 2sek.
Heat frequency:	ca. 52kHz
open circuit power consumption:	< 100 mA
power consumption after turn off:	< 10 mA

Skizze Resolux 103:



Standard version:	Resolux, Best.-Nr. 10312-1N0 switch and compact lamp light colour 827.
Version without switch:	Resolux, Best.-Nr. 10312-0N0 without switch with compact lamp light colour 827.
Standard light colour 840 (white):	Resolux, Best.-Nr. 10312-1N084 switch and compact lamp light colour 840 (white).

Further comfort additions:

H "half-light" switching HLS. The Resolux 103 with a toggle switch can be switched to 50% light yield and power reduction.

e.g.: 10312-1NH

P pearl integration. Opal diffuser lose 30% of their light transmission. The chemical industry developed a system to inject microscopically small PMMA pearls into the diffuser moulding compound to diffuse light. With 12% pearl concentration a comfortable diffusion has been reached. The loss of light is 14% and therefore as good as colourless diffusers. Using the P-diffusers will reduce the dazzling by direct light remarkably.

e.g.: 10312-1N0P

Order No	Volt	Watt	Length	Current consumption	Comparable incandescent bulb
10312-1N0	12	11	314 mm	1030 mA	75 Watt
10324-1N0	24	11	314 mm	520 mA	75 Watt
10312-1NH	12	11	314 mm	1030 mA	75 Watt
10324-1NH	24	11	314 mm	520 mA	75 Watt
10312-1N0P	12	11	314 mm	1030 mA	75 Watt
10324-1N0P	24	11	314 mm	520 mA	75 Watt

Einbauleuchte 113



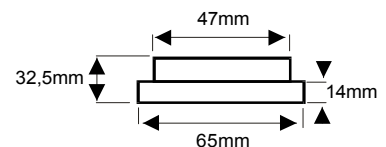
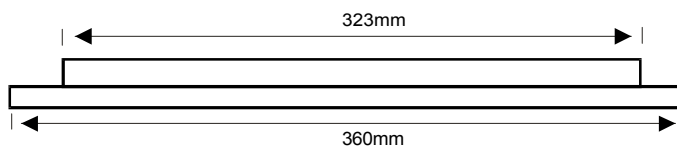
Description: the recessed fluorescent luminaire is fitted with one compact lamp 11 Watt, switch with silver-plated contacts, AMP-flag connection. Fixture by means of the enclosed non-rusting screws. The housing is made of Polycarbonat white. Two types of diffuser are available: standard with a clear prismatic diffuser made of Polycarbonat or " P " diffuser made of PMMA (polymethylmethacrylate) with light diffusion as a result of the diffuser pearls embedded in the PMMA matrix. The diffuser is secured on both sides with plastic nuts. The square in front of the switch (33 x 18 mm) can be fitted with a firm logo at a minimum quantity of 500 lights. The luminaire has got a CE-certification. The PCB is fitted with a soft lamp start and a safety circuit with offers crucial advantages and therefore it underlines the professional application of this luminaire. All luminaires with CE-label.

For export only.

Technical data:

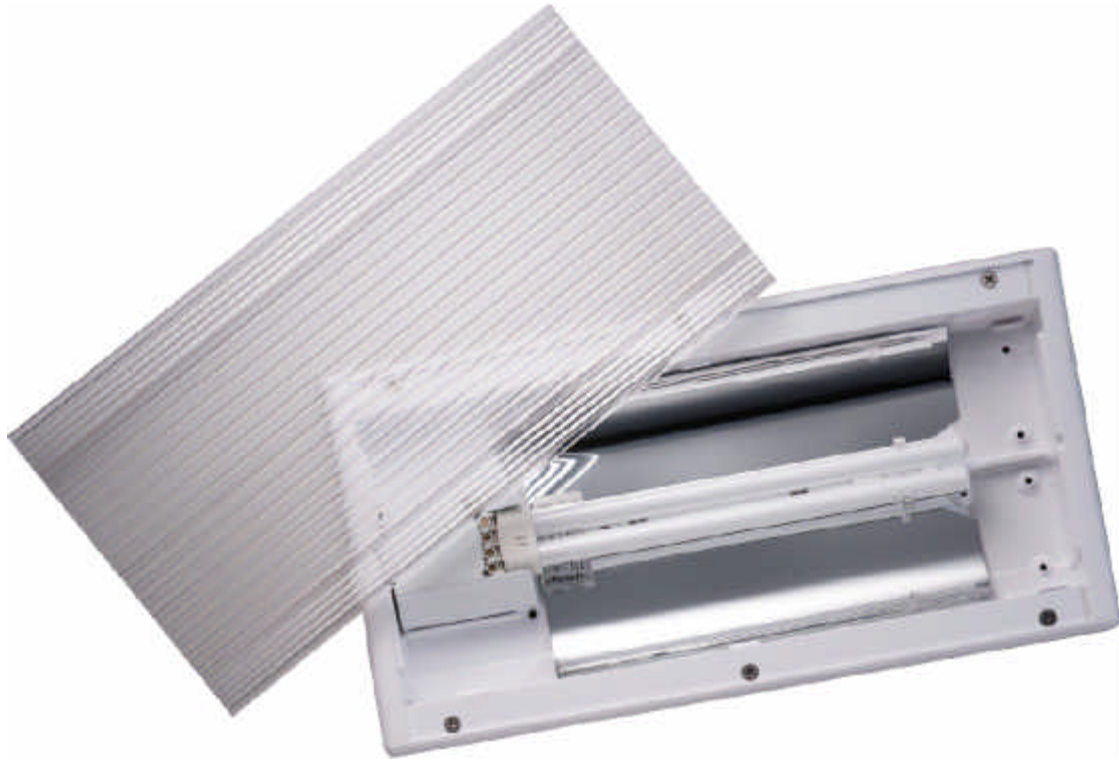
Operating voltage: 12 Volt DC = 10,5 - 15,0 V DC
 24 Volt DC = 21,0 - 29,0 V DC
 Radio interference suppression according to EN 55015 + VDE 0871 B
 Operating temperature range: -30°C to +60°C

Technical specification	11312-1N0	11324-1N0
Voltage range	10,5 to 14,8 V DC	21,0 to 28,5 V DC
Current consumption	1000 mA	500 mA
Idle current	20 mA	20 mA
Operating frequency	35 kHz	35 kHz
Temperature range	- 20°C to 60°C	
PCB board material	GRP double-sided contacts	
Measurements	L/W/H = 360/65/14 mm	
Cut dimension	L/W = 323/47 mm	
Lamp description	TC-EL 11/82 (warm light colour)	
Lamp start	Warmstart / Hot-start -"Softstart"	



Order-No.	Model
113.-1N0	Standard
113.-0N0	Without switch
113.-1N0P	With pearl diffuser
113.-1N0P84	With pearl diffuser and light color white

EINBAULEUCHTE 160



Flushmounted interior ceiling luminaire, easy installation with countersunk screws hidden by the PC-cover. Economical luminaire with high light output 11 W compact lamp. High-tech PC-board 12 or 24 Volt DC, softstart, polarity diode and patented polarity reversal protection.

163XX-0F0R for curved ceilings (radius adapted housing).

An exclusive interior lighting for commercial vehicles e.g. busses, library-, exhibition- and sales vehicles, administration and measuring vehicles or ambulances.

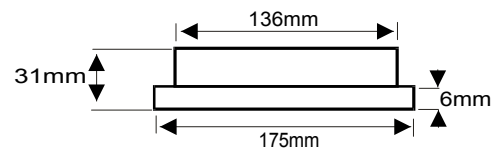
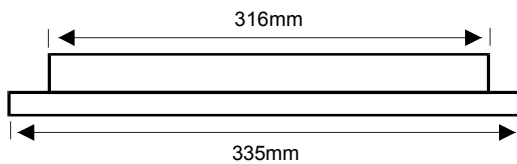
Technical data:

Operating voltage: 12 Volt DC = 10,5 - 15,0 V DC

24 Volt DC = 21,0 - 29,0 V DC

Radio interference suppression according to EN 55015 + VDE 0871 B

Operating temperature range: -30°C to +60°C



Type	Wattage
16312-0F0	1 x 11 Watt
16324-0F0	1 x 11 Watt
16312-0F0R	1 x 11 Watt
16324-0F0R	1 x 11 Watt

Voltage
12 Volt DC
24 Volt DC
12 Volt DC
24 Volt DC

RESOLUX

The energy saving lights of this series which are already successfully introduced to the market are now substantially improved by a newly developed PCB. The entire control is now built by SMD-technology and powerful filters are used to lower interference and increase the safety of operation. The flicker-free soft start controlled by electronics enlarges the switching frequency rate. Improved electronic parts decrease losses and increase the durability of PC-board and compact lamp. The intelligent PC-board detects critical operational conditions and will switch off the compact lamp if necessary. The compact lamp will operate at its optimum by automatic control. A constant luminous energy during minimum to maximum operating voltage, as well as undervoltage, secures long durability for the compact lamp. The low-loss polarity reversal protection also is a new addition. All luminaires can be used at high switching frequency rates as well as long operation times. The durability of the compact lamp is about 8000 h. All luminaires are built according to CE-certification. A high radio interference suppression according to VDE 087 B is standard. This is more than required by CE-Certification. The ground sheet is made of aluminium and is white powder-coated. The prismatic cover is made of temperature- and UV-resistant PMMA.

Due to these improvements our tradition of high-grade products continues, which guarantees reliability as well as quality.

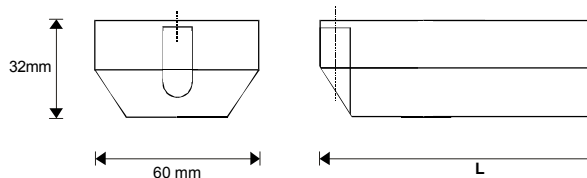
Daten:

Voltage range 12 Volt: 10,5 Volt bis 15,0 Volt DC
Voltage range 24 Volt: 21,0 Volt bis 29,0 Volt DC
Operating frequency: 33 kHz
Crestfactor: < 1,48
Heat time: ca. 2 sek.
Heat frequency: ca. 52 kHz

Open circuit power consumption: < 100 mA

Power consumption after turnoff: < 10 mA

Resolux 100-153:



Order No	Volt	Watt	Length	Current consumption	Comparable incandescent bulb
10012-1N0	12	5	185 mm	510 mA	25 Watt
10024-1N0	24	5	185 mm	250 mA	25 Watt
10112-1N0	12	7	212 mm	650 mA	40 Watt
10124-1N0	24	7	212 mm	320 mA	40 Watt
10212-1N0	12	9	245 mm	820 mA	60 Watt
10224-1N0	24	9	245 mm	390 mA	60 Watt
15012-1N0	12	2 x 5	300 mm	1020 mA	2 x 25 Watt
15024-1N0	24	2 x 5	300 mm	500 mA	2 x 25 Watt
15112-1N0	12	2 x 7	378 mm	1300 mA	2 x 40 Watt
15124-1N0	24	2 x 7	378 mm	640 mA	2 x 40 Watt
15312-1N0	12	2 x 11	608 mm	2060 mA	2 x 75 Watt
15324-1N0	24	2 x 11	608 mm	1040 mA	2 x 75 Watt
11212-1N0	12	9	(*)	820 mA	60 Watt
11224-1N0	24	9	(*)	390 mA	60 Watt
12212-1N0	12	8	378 mm	760 mA	40 Watt
12224-1N0	24	8	378 mm	380 mA	40 Watt
12312-1N0	12	13	608 mm	1250 mA	75 Watt
12324-1N0	24	13	608 mm	625 mA	75 Watt

(*) :Masse Einbauleuchte Resolux 112: Aufbaulänge: 283 mm, Aufbaubreite 66 mm, Aufbauhöhe 15 mm,
 Einbaulänge: 246 mm, Einbaubreite 48 mm, Einbautiefe 20 mm

Lumlite



Made in Germany

LUMLITE an economical interior luminaire with high light intensity. The 9 watt compact lamp (equivalent to 60 watt incandescent lamp) satisfies the needs on caravan, bus and commercial vehicle market with light quantity and colour. The PC cover can be removed by slight pressure on the edges. The ABS-chassis has a cable duct to simplify the feeding of the connection cable. The PC-board is build according to the latest technology.

LUMLITE has been developed for the individual private and commercial 12 + 24 V application with long life compact lamp, low maintenance while having optimum light conditions.

LUMLITE is available with and without switch.

Technical data:

Operating voltage: 12 Volt DC = 10,5 - 15,0 V DC
24 Volt DC = 21,0 - 29,0 V DC

Radio interference suppression according to EN 55015

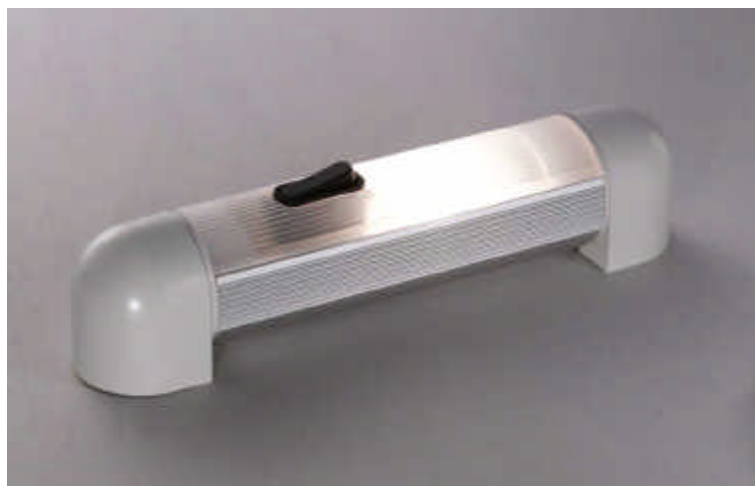
Operating temp. range: -10°C to +55°C

Operating frequency: 60kHz

Dimensions l/b/h: 220mm/47mm/32mm

Safety protection against idle current, undervoltage and faulty lamp.

MOBILUX®



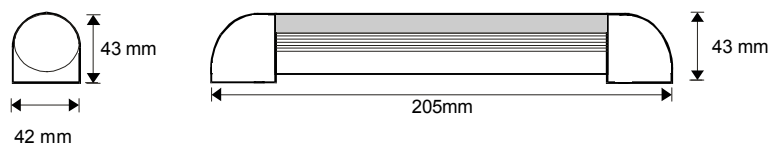
Adjustable fixture with 10Watt Xenon Festoon lamp.
Not only that you can take mobile light along with you, now you even can adjust it after being fixed to the wall.

Mobilux is an aluminium profile covered with a PC prismatic diffuser. The ends are closed off by plastic parts, which are necessary for the wall mounting and allow a rotation of 270°. The ray of light can be changed from direct to indirect illumination.

Mobilux is available in 3 different colours: Aluminium, White and Gold.

Technical data:

Operating voltage: 12 Volt AC/DC or 24 Volt AC/DC
Diameter: 42mm



Type	Voltage	Power	Lampe
M(*) 10/12	12 Volt	10 Watt	Xelogen
M(*) 10/24	24 Volt	10 Watt	Xelogen
(*) : MG= Gold MW= White MA= Aluminium			

MOBILUX®



Adjustable fixture with TL- or compact lamp.
Not only that you can take mobile light along with you, now you even can adjust it after being fixed to the wall.

Mobilux is an aluminium profile covered with a PC prismatic diffuser. The ends are closed off by plastic parts, which are necessary for the wall mounting and allow a rotation of 270°. The ray of light can be changed from direct to indirect illumination. The PC-board as well as the terminal and the TL- or compact lamp are placed inside the aluminium profile. The luminaires will be ready with a 8 or 13 W TL-lamp or with a 11 W compact lamp.

Mobilux is available in 3 different colours: Aluminium, White and Gold. The light colour #827 is identical to the light colour of an incandescent lamp therefore will accentuate the required comfortable character. The PC-board has a softstart as well as a safety circuit.

Technical data:

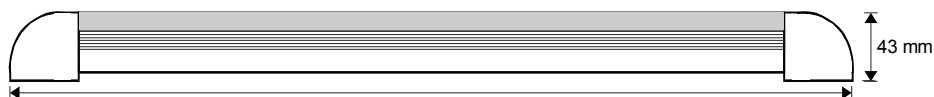
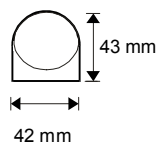
Operating voltage: 12 Volt DC = 10,5 - 15,0 V DC

24 Volt DC = 21,0 - 29,0 V DC

Radio interference suppression according to EN 55015 + VDE 0871 B

Operating temperature range: -20°C to +70°C

Diameter: 42mm



13 Watt = 730mm
11 Watt = 400mm
8 Watt = 500mm

Type	Voltage	Power	Lampe
M(*) 11/12	12 Volt	11 Watt	TC-EL 11/83
M(*) 11/24	24 Volt	11 Watt	TC-EL 11/83
M(*) 8/12	12 Volt	8 Watt	TL 8/29
M(*) 8/24	24 Volt	8 Watt	TL 8/29
M(*) 13/12	12 Volt	13 Watt	TL 13/29
M(*) 13/24	24 Volt	13 Watt	TL 13/29
(*) : MG= Gold MW= White MA= Aluminium			

MOBILUX®



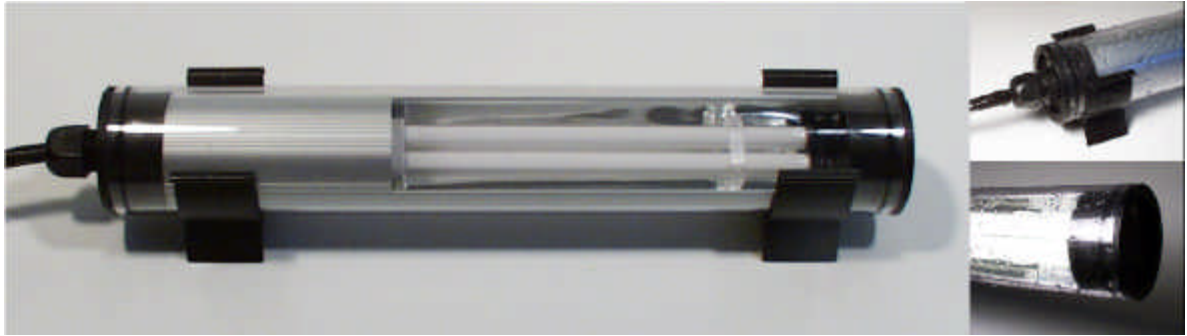
MOBILUX is available in 3 different colours: Aluminium, white and gold. The aluminium profile is covered with a PC prismatic diffuser. Providing a yearly demand of 2000 and more luminaires the end caps can be produced in every available RALcolour

MOBILUX for TL- and compact lamps is fitted with a Hi-Tech PC-board which is newly developed. SMD-technology, radio interference suppression according to VDE 0871 B and a low loss polarity reversal protection are only some of the advantages of this high quality PC-board. Quality and reliability of the product speak for themselves.



MOBILUX Xelogen version is fitted with a 10 Watt Xelogen strip-light lamp. Switch and lamp holders are fixed on a sheet-bar. This luminaire is the perfect addition to the MOBILUX with compact and TL-lamps and a perfect solution wherever you need short-term illumination for instance in bunks or cabins

MOBILUM[®]



An aluminium profile - which will be set up for different lamps and wattages - is fitted into a PC-tube. The ends are sealed tight. At one side is a cable gland suitable for 6,00 -12,00 mm O/D cable. Protection class IP 68, tubediameter 63 mmØ. All fixtures with compact lamps are available in 12 or 24 V DC. At present the fixtures with T5 fluorescent lamps are only available in 24 V DC. The luminaries have an integrated soft start, an overcurrent protection and a polarity diode and work during admissible operating voltage with almost 100% lumen output.

Designed for: **commercial vehicles, vessels and fishing boats, machinery, tents etc.**

The fixture will be installed via two mounting clamps and is still adjustable. Protection class IP 68 proofs that the luminaire can be used in a rough and wet surrounding. Fixing clips are available for various operations, for details see back page.

Technical data:

Operating voltage: 12 Volt DC = 10,5 - 15,0 V DC

24 Volt DC = 21,0 - 29,0 V DC

Radio interference suppression according to EN 55015

Operating temperature range: -20°C to +70°C

Diameter: 63mm

Type	Voltage	Compact lamp	Length
MO 11/12 + 24Volt	12+24 Volt DC	11 Watt (TC-EL 11)	414mm
MO 18L/12 + 24 Volt	12+24 Volt DC	18 Watt (TC-L 18)	550mm
MO 36L/12 + 24 Volt	12+24 Volt DC	36 Watt (TC-L 36)	750mm
Type	Voltage	Fluorescent lamp T8	Length
MO 18/12 + 24	12+24 Volt DC	18 Watt (TL 18)	894mm
MO 36/12 + 24	12+24 Volt DC	36 Watt (TL 36)	1505mm
Type	Voltage	Fluorescent lamp T5	Length
MO 14/24	24 Volt DC	14 Watt (T5)	894mm
MO 21/24	24 Volt DC	21 Watt (T5)	1194mm
MO 28/24	24 Volt DC	28 Watt (T5)	1494mm
MO 35/24	24 Volt DC	35 Watt (T5)	1794mm

MOBITRUCK

Flache Aluminiumeinbauleuchte bestückt mit 2x10 Watt Xelogen - Lampen



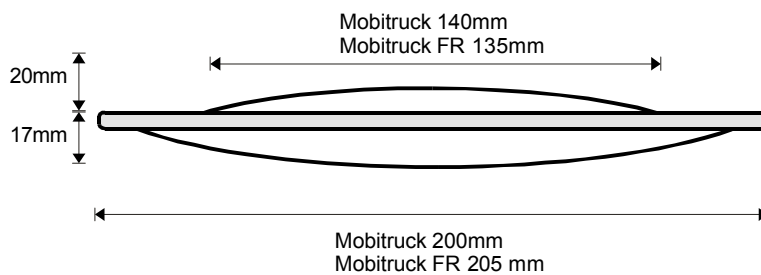
MOBITRUCK

Mobitruck is an extremely flat recessed luminaire made out of aluminium with a PC prismatic diffuser. Two 10 watt Xelogen lamps will provide adequate illumination and last four times longer than ordinary halogen lamps.



MOBITRUCK FR

Mobitruck FR IP 54 is an extremely flat recessed luminaire made out of aluminium with a PC prismatic diffuser. A rubber seal ring between prismatic cover and chassis fulfills the protection class IP54.



Type	Voltage	Power
MT 20/12	12 Volt	20 Watt
MT 20/24	24 Volt	20 Watt
MTFR 20/12	12 Volt	20 Watt
MTFR 20/24	24 Volt	20 Watt



A brand new alternative to conventional halogen lamps

Are you still using halogen lamps?

You will have noticed the short working life of the lamps. Have you had enough of changing the lamps constantly? Then please let us convince you of the advantages of the new Xelogen lamp.



Technische Daten / technical data	Xelogen	Halogen
Durability	7500	2000
UV-radiation	nein/no	Ja/yes
Suitable for dimming	yes	yes
Protection	yes	no
Temperature	low	high
Special handling	no	don't touch
Colour	2700K	3000K

The working life of Xelogen lamps is four times longer compared to halogen lamps!

- direct exchange against halogen lamps with G4 socket.
- durability is min. 7500! h.
- Xelogen lamps do not produce UV - radiation.
- equal light output as halogen lamp.
- equal colour as incandescent lamp
- lower gas pressure, therefore no bursting glass bulb

Technical data

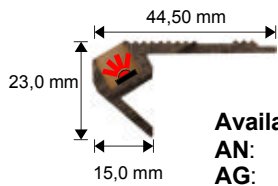
12 Volt	24/28 Volt
<p>Type: XH10/12 G4 (10 Watt) XH20/12 G4 (20 Watt)</p>	<p>Type: SXH 10/12 (10 Watt)</p>
	<p>Type: XH10/24 G4 (10 Watt) XH20/24 G4 (20 Watt) XH10/28 G4 (10 Watt) XH20/28 G4 (20 Watt)</p>

LEDSTEP

Technical Data

LEDSTEP: _____

Type LP450x/xx



Available in:
AN: alu anodised
AG: alu gold anodised

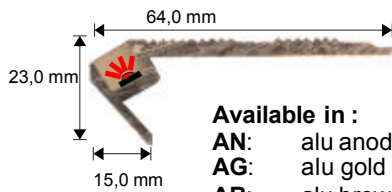


Type LP450x/AN



Type LP450x/AG

Type LP650x/xx



Available in:
AN: alu anodised
AG: alu gold anodised
AB: alu brown anodised

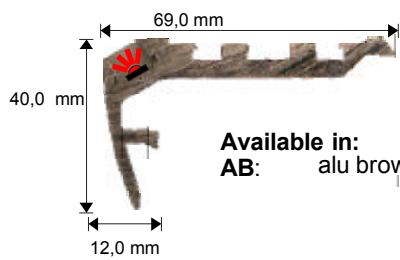


Type LP650x/AN



Type LP650x/AB

Type LP900x



Available in:
AB: alu brown anodised

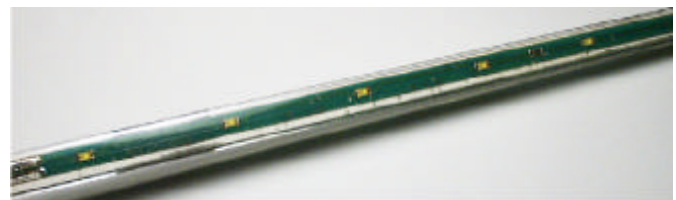
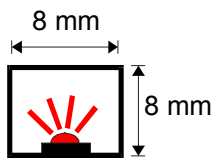


Type LP900x



Type LP900x

LEDLINE: _____



Type LLO

Order Code:

Ledstep :

LP450RAN12/580

Type
 LP450
 LP650
 LP900

Colour
 R= red
 G= green
 O= orange
 W= white
 B= blue

Anodisem type
 AN= alu
 AG= alu gold
 AB= alu brown

Voltage
 12= 12 Volt AC/DC
 24= 24 Volt AC/DC

Length
 required length in mm
 (here 580mm)

Ledline:

LLR12/580

Type
 LL

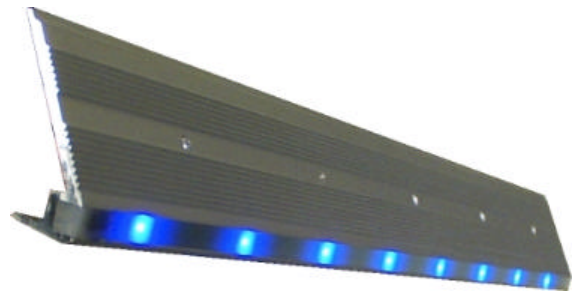
LED colour
 R= red
 G= green
 O= orange
 W= white
 B= blue

Voltage
 12= 12 Volt AC/DC
 24= 24 Volt AC/DC

Length
 required length in mm
 (here 580mm)

LED STEP

LED Step Lighting for Vehicles



In situations where the illumination is poor or it is dark in general angle shaped aluminium profiles with inserted LED lighting rows will make steps or edges of platforms visible. The profiles with their grooves and edges are also built for more tread safety. The profile series 900 has even added a rubber profile as an anti-skid device.

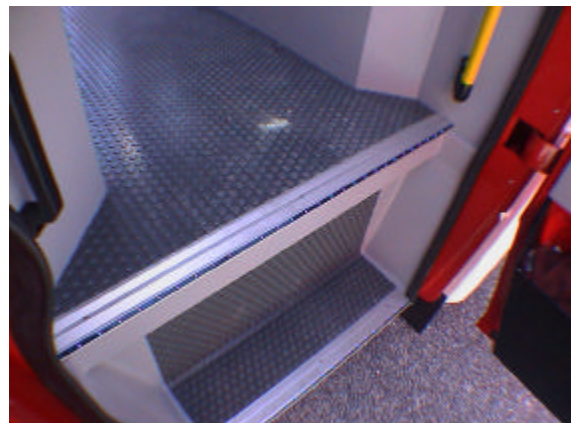
Mounting holes are not inserted, this has to be done during assembly to enable a perfect fit. There are several colours in our product range, anodised aluminium anodised gold aluminium and anodised dark brown aluminium.

For the commercial vehicles we would recommend the anodised aluminium since the wear and tear of the surface will not be noticed.

The LED's will be sealed with epoxy casting resin into a gap in the profile. This procedure makes the LED's water-proof and protects of mechanical stress.

The aluminium profile LEDSTEP can be manufactured from 0,2 to 5m and will be made to measure and then fitted with LED's. The distance between the LED's is 3 cm. The profile is also available without LED's. In this case the gap will be filled with epoxy casting resin. LEDSTEP is available for 12 V AC/DC as well as 24 V AC/DC. The LED colours are red, orange, green, blue and white.

LEDLINE - LED's inserted in epoxy casting resin - are also available without a profile. LEDLINE is fitted into a plastic profile 8mm x 8mm. The LED colours as well as the available profile lengths are identical to LEDSTEP.

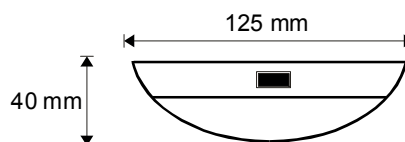


MININOVA

HALOGEN / XENON



Mininova, surface-mounted luminaire brass polished, gold- or chromium plated or aluminium white for wall or ceiling mounting with macrolon opal diffuser and a toggle switch. The luminaires have a diameter of 125mm and a height of 40mm.



Mininova Gold

MN 10/12	mit Lampe Pos. 3	10W/12V
MN 20/12	mit Lampe Pos. 3	20W/12V
MN10/12-X	mit Xenon Lampe	10W/12V
MN20/24	mit Lampe Pos. 3	20W/24V
MN10/28	mit Lampe Pos. 3	10W/28V

Mininova Messing

MNM 10/12	mit Lampe Pos. 3	10W/12V
MNM 20/12	mit Lampe Pos. 3	20W/12V
MNM 10/12-X	mit Xenon Lampe	10W/12V
MNM 20/24	mit Lampe Pos. 3	20W/24V
MNM 10/28	mit Lampe Pos. 3	10W/28V



Mininova Weiss

MNW 10/12	mit Lampe Pos. 3	10W/12V
MNW 20/12	mit Lampe Pos. 3	20W/12V
MNW 10/12-X	mit Xenon Lampe	10W/12V
MNW 20/24	mit Lampe Pos. 3	20W/24V
MNW 10/28	mit Lampe Pos. 3	10W/28V

Mininova Chrom

MNC 10/12	mit Lampe Pos. 3	10W/12V
MNC 20/12	mit Lampe Pos. 3	20W/12V
MNC 10/12-X	mit Xenon Lampe	10W/12V
MNC 20/24	mit Lampe Pos. 3	20W/24V
MNC 10/28	mit Lampe Pos. 3	10W/28V

FR-LEUCHTEN

FR luminaires (protection class IP 65)

These luminaires (IP 65 classification) are dust and jetproof. They are suitable for extreme operating conditions, i.e. in wet rooms, engineering rooms and other rooms with excessive dust and/or soiling. Their robust construction ensures a high degree of safety.

FR11

Small impact and moisture-proof luminaire for compact lamp 11 watt / 12 or 24 Volt DC



FR 11

Housing white polycarbonate with one self-sealing grommet on opening/closing end, two boreholes with rubber washers inserted for sealing. Clear prism polycarbonate diffuser, with a swivelling device on one side so that the diffuser can be unhooked and removed if necessary. Securely fixed on the other end with a V2A screw. Connection via three-way terminal. The PCB is fitted on the inside of the white reflector sheet.

FR18 + FR40

Impact-proof wet room luminaire for TL 18 or compact lamp 40 watt / 12 or 24 Volt DC

Housing grey polycarbonate with polyurethane sealing, two self-sealing grommets, two boreholes for ceiling or wall mounting, rubber seals and washers for sealing fixture are included. The diffuser is made of injection-moulded polycarbonate with inner prism. Swivelling device on one end so that diffuser can be unhooked and removed if necessary, secured by V2A clamps on the other end. Inverter ballasts are fixed to the white powder-sprayed metal sheet reflector together with three-way connection terminal. Operating temperature range: -20°C to +60°C.



FR 18



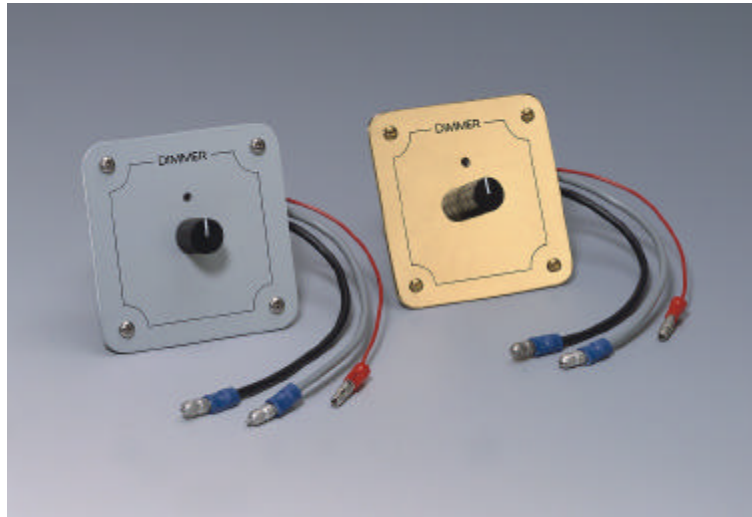
FR 40

Type	Wattage	Voltage	Power	Lamp	Measurements
FR11/12	11 Watt	12 Volt	1,0 A	TC-EL 11/82	(L/B/H) 298/95/72 mm
FR11/24	11 Watt	24 Volt	0,5 A	TC-EL 11/82	(L/B/H) 298/95/72 mm
FR18/12	18 Watt	12 Volt	1,1 A	TL 18/83	(L/B/H) 662/100/110 mm
FR18/24	18 Watt	24 Volt	0,8 A	TL 18/83	(L/B/H) 662/100/110 mm
FR40/12	40 Watt	12 Volt	4,3 A	TC-L 40/83	(L/B/H) 662/100/110 mm
FR40/24	40 Watt	24 Volt	2,1 A	TC-L 40/83	(L/B/H) 662/100/110 mm

POWER - DIMMER

● 12V / 20A / 240W

● 24V / 20A / 480W



Dimming light creates comfort in living accommodations. Bright for instance for reading or working and dusky on occasions where a cosy atmosphere is desired. Dimming light reduces the power consumption and the halogen lights last longer. The dimmer is powerful enough to regulate groups of light. It is no problem to integrate the hall light or the halogen illumination in kitchen or seating area. The capacity of 240 W / 12 Volt D C and 480 W / 24 Volt DC will be powerful enough for almost all occasions. **Fluorescent lamps cannot be dimmed.** The Power - Dimmer for halogen lamps and ordinary light bulbs (incandescent lamps) is an electronic dimmer of smallest size with latest High-Tech electronics and high efficiency. The mounting sheet can be delivered in several different colours. The integrated LED informs you whether the dimmer is on or off.

Technische Daten	DI20A/12(*)	DI20A/24(*)	
Spannung / Voltage	12 Volt DC	24 Volt DC	
Spannungsbereich / Operating voltage	10,5 - 15 Volt DC	21 - 29 Volt DC	
Leistung / Capacity	240 Watt	480 Watt	
Schaltstrom / Current Consumption	20 Amp. Max.	20 Amp. Max.	
Umgebungstemperatur / Temperature Range	-10°C bis +50°C	-10°C bis +50°C	
EMV gem. / Electromagnetic Compatibility	EN50081-1	EN50081-1	
Immunität / Immunity	EN50082-1 Klasse A	EN50082-1 Klasse A	
Funkschutz / Radio Interference Suppression	EN55015	EN55015	
Abmessungen/ Dimensions L/B/Einbautiefe (L/B/Einbautiefe / length/wide/built-in-depth)	70/70/20 mm	70/70/20 mm	
Einbauöffnung / Cut Dimensions	43/43 mm	43/43 mm	
(*) Colour mounting sheet	M = brass polished	S = silvergrey	C = Chrom